

section 5 **WIREWORLD & KITCHEN ACCESSORIES**







Components for the **Kitchen & Furniture** Trade

5 **WIREWORK & KITCHEN ACCESSORIES**

WIREWORK	98
BASKETS	102
ACCESSORIES	104

■ WIREWORK

SOFT CLOSE CHROME BASE UNIT

- Finish: chrome
- Sizes: 300, 400 and 500mm
- Side mounted on telescopic runners with soft close feature
- Very easy to assemble and install

Code	Description	Box Qty
2101005	Soft close chrome base unit 300mm	1
2101010	Soft close chrome base unit 400mm	1
2101015	Soft close chrome base unit 500mm	1



SOFT CLOSE 150mm CHROME BASE UNIT

- Finish: chrome
- An under counter pullout to suit a 150mm unit
- Side mounted on telescopic runners with soft close feature
- Very easy to assemble and install

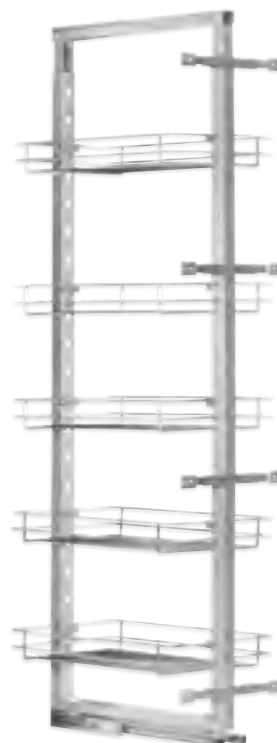
Code	Description	Box Qty
2101000	Soft close chrome base unit 150mm	1



SOFT CLOSE LARDER UNIT

- Chrome pull-out larder unit with full extension soft close slide
- Sizes: 150, 300, 400, 500 and 600mm
- Fully adjustable from 1950 - 2100mm to suit different cabinet heights
- The baskets can be moved up or down the frame and lock into place
- The baskets can be removed easily for cleaning

Code	Description	Box Qty
2101050	Soft close larder unit 150mm	1
2105030	Soft close larder unit 300mm	1
2105032	Soft close larder unit 400mm	1
2105035	Soft close larder unit 500mm	1
2105038	Soft close larder unit 600mm	1





SWIVEL LARDER UNIT

- Chrome pull-out larder unit with full extension soft close slide
- Sizes: 300, 400 and 500mm
- Similar to a traditional larder but swivels left or right once pulled out fully
- Rotating the larder always easy access to the products at the back of the unit
- Fully adjustable from 1950 - 2100mm to suit different cabinet heights
- The baskets can be moved up or down the frame and lock into place
- The baskets can be removed easily for cleaning

Code	Description	Box Qty
2104060	Swivel larder unit 300mm	1
2104070	Swivel larder unit 400mm	1
2104080	Swivel larder unit 500mm	1



SOFT CLOSE PANTRY UNIT

- Stylish chrome pantry unit
- Size: 500mm
- When you open the door the baskets come out of the unit
- A second row of baskets are mounted on the back of the door
- Better storage capacity than a traditional larder unit
- Baskets can be removed for cleaning purposes

Code	Description	Box Qty
2105040	Soft close pantry unit 500mm	1



CURVED WINE RACK SHELF

- Stylish shelf which fits in to the unit for holding bottles
- Sizes: 300, 400, 500 and 600mm
- Looks good when two or three are put into an open unit
- Supplied individually packed with fixing brackets
- Finish: chrome

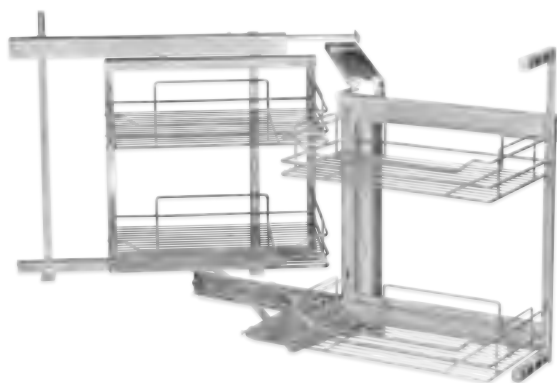
Code	Description	Box Qty
2101040	Curved wine rack shelf 300mm	1
2101042	Curved wine rack shelf 400mm	1
2101044	Curved wine rack shelf 500mm	1
2101046	Curved wine rack shelf 600mm	1



SOFT CLOSE CORNER UNIT

- A stylish solution for easy access to corner units
- This product can be fitted in a left hand or right hand corner
- It comes with 4 wire baskets and is fitted on soft close runners
- Suitable for a 900 x 900mm corner unit

Code	Description	Box Qty
2105025	Soft close corner unit	1



KIDNEY CORNER UNIT WITH GALLERY RAIL

- A perfect solution for maximising space in a blind corner unit
- Two shelves which pull out independently
- Each shelf has both soft opening and closing
- The shelves are fitted with a stylish chrome gallery rail
- Suitable for use with a 450mm door

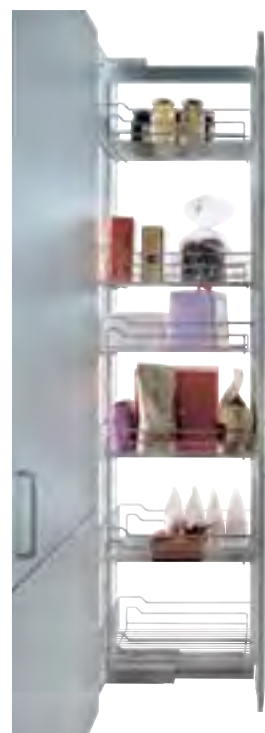
Code	Description	Box Qty
2105070	Kidney corner unit with gallery rail RH	1
2105080	Kidney corner unit with gallery rail LH	1



KESSEBÖHMER CLICK FIXX LARDER

- Stylish larder mounted on full extension 120kg runners
- Click Fixx system for fast assembly
- Adjustable 1900mm to 2300mm
- Comes complete with 5 baskets
- Minimum cabinet depth: 500mm

Code	Description	Box Qty
2107000	Kesseböhmer Click Fixx larder 300mm	1
2107010	Kesseböhmer Click Fixx larder 400mm	1
2107020	Kesseböhmer Click Fixx larder 500mm	1





KESSEBÖHMER CLICK FIXX PANTRY

- When you open the door the baskets come out of the unit
- A second row of baskets are mounted on the back of the door
- Better storage capacity than a traditional larder unit
- Baskets can be removed for cleaning purposes
- Minimum cabinet depth 500mm
- 1700mm high, capacity 70kg

Code	Description	Box Qty
2107100	Kesseböhmer Click Fixx pantry 500mm	1



KESSEBÖHMER MAGIC CORNER

- It comes with 4 wire baskets and is fitted on soft close runners
- Suitable for a 900 x 900mm corner unit
- Click Fixx assembly for speed
- Adjustable shelf options
- 30kg storage capacity

Code	Description	Box Qty
2107200	Kesseböhmer Magic Corner LH	1
2107210	Kesseböhmer Magic Corner RH	1



KESSEBÖHMER LE MANS UNIT

- Suitable for a 450mm door
- Weight capacity 20kg per shelf
- Two shelves which pull out independently
- The shelves are fitted with a stylish chrome gallery rail

Code	Description	Box Qty
2107250	Kesseböhmer Le Mans unit LH	1
2107260	Kesseböhmer Le Mans unit RH	1



BASKETS

HIGH LINE CHROME BASKET

- An individual pull out basket on telescopic slides
- 450mm deep and suitable for a variety of size units
- Can be fitted in a tall unit as a handy alternative to a larder
- Are also suitable for build in wardrobes
- Easy to fit

Code	Description	Box Qty
2801100	Chrome high line basket for 300mm unit	1
2801105	Chrome high line basket for 400mm unit	1
2801110	Chrome high line basket for 450mm unit	1
2801115	Chrome high line basket for 500mm unit	1
2801125	Chrome high line basket for 600mm unit	1
2801135	Chrome high line basket for 800mm unit	1
2801140	Chrome high line basket for 900mm unit	1
2801145	Chrome high line basket for 1000mm unit	1



SOFT CLOSE CHROME BASKET

- An individual pull out basket on soft closing slides
- 450mm deep and suitable for a variety of size units
- Can be fitted in a tall unit as a handy alternative to a larder
- Are also suitable for build in wardrobes
- Easy to fit

Code	Description	Box Qty
2801210	Soft close chrome basket for 300mm unit	1
2801211	Soft close chrome basket for 400mm unit	1
2801212	Soft close chrome basket for 450mm unit	1
2801213	Soft close chrome basket for 500mm unit	1
2801215	Soft close chrome basket for 600mm unit	1
2801217	Soft close chrome basket for 800mm unit	1
2801218	Soft close chrome basket for 900mm unit	1
2801219	Soft close chrome basket for 1000mm unit	1



¾ WIRE CAROUSEL

- Wire carousel for a corner unit
- Providing practical access storage in a blind corner base unit, the ¾ carousel set consists of 2 baskets complete with brackets and door clip
- Each bracket is independently mounted to the corner post with brackets designed to span the door hinges
- Door mounted clip automatically opens the bottom carousel when the cabinet door is opened
- Basket capacity 10-15kg, total load capacity 25kg

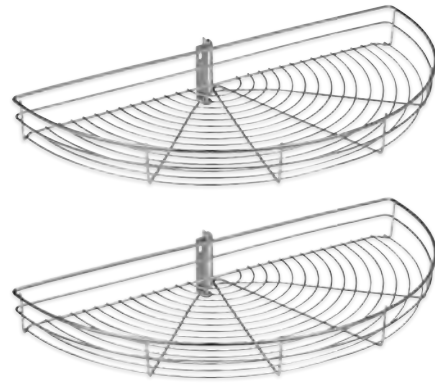
Code	Description	Box Qty
2801230	¾ Chrome wire carousel for 900mm unit	1
2801232	¾ Chrome wire carousel for 1000mm unit	1





½ WIRE CAROUSEL

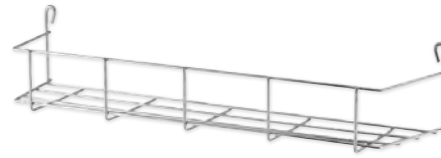
- Wire carousel for a corner unit
- Providing practical access storage in a blind corner base unit, the ½ carousel set consists of 2 baskets complete with brackets and door clip
- Each bracket is independently mounted to the corner post with brackets designed to span the door hinges
- Door mounted clip automatically opens the bottom carousel when the cabinet door is opened
- Basket capacity 10-15kg, total load capacity 25kg



Code	Description	Box Qty
2801242	½ Chrome wire carousel for 720mm unit	1

SINGLE TIER SPICE RACK

- A selection of spice racks suitable for different sizes units
- They are very simple to fit and look great
- The rack screws easily to the back of the door
- Perfect for utilising otherwise wasted space
- Handy for keeping small jars in one place



Code	Description	Box Qty
2801540	Single tier spice rack for 300mm door	1
2801545	Single tier spice rack for 400mm door	1
2801550	Single tier spice rack for 500mm door	1

TRIPLE TIER SPICE RACK

- A selection of spice racks suitable for different sizes units
- They are very simple to fit and look great
- The rack screws easily to the back of the door
- Perfect for utilising otherwise wasted space
- Handy for keeping small jars in one place



Code	Description	Box Qty
2801590	Triple tier spice rack for 300mm door	1
2801595	Triple tier spice rack for 400mm door	1
2801600	Triple tier spice rack for 500mm door	1

ALUMINIUM STYLE WOODEN GLASS DOOR

- A range of wooden doors that look like aluminium frame doors
- Come with frosted glass and look great in a modern style kitchen
- Ideal for use with bi fold lift up systems or as stand alone feature doors
- Wooden frame can be bored giving greater choice of use of hinges and handle options
- The look and feel of an aluminium door at a more competitive price

Code	Description	Box Qty
1000160	Aluminium style wooden glass door 355 x 995mm	2
1000100	Aluminium style wooden glass door 715 x 395mm	2
1000110	Aluminium style wooden glass door 715 x 495mm	2
1000140	Aluminium style wooden glass door 355 x 595mm	2
1000150	Aluminium style wooden glass door 355 x 795mm	2
1000155	Aluminium style wooden glass door 355 x 895mm	2



KITCHEN WICKER BASKET

- The baskets are ideal for storing vegetables and fresh foodstuffs
- Each wicker basket includes matching wooden runners
- Easy to fit
- Options for different size units

Code	Description	Box Qty
2801050	Kitchen wicker basket for 400mm unit	1
2801052	Kitchen wicker basket for 500mm unit	1
2801054	Kitchen wicker basket for 600mm unit	1



ACCESSORIES

WORKTOP PROTECTOR RODS

- Stainless steel style worktop rods look great in all modern kitchens
- Enable you to remove a hot pan from the hob without ruining your worktop
- Each rod is backed with self adhesive heat resistant tape
- No need to rout your worktop saving time and mess
- Easy to apply and look great on matt, gloss, solid wood or granite worktops
- Tested to withstand very high temperatures, water and food spillages

Code	Description	Box Qty
2908000	Worktop protector rods	1



CORNER BAR HINGE

- Used for hinging a door on a door in a corner cabinet
- Strong, sturdy and a better long term option than a bi fold hinge
- Use on a standard 715mm door but you need to reduce the door width by 42mm
- Finishes: brushed steel or bronze

Code	Description	Box Qty
2908100	Corner bar hinge brushed steel	
2908150	Corner bar hinge bronze	



CHROME WORKTOP POP UP SOCKET

- This pop up and retractable socket is ideal for use on counters worktops, island units, benches and desks
- The socket is IP54 rated when closed making the product suitable for use in kitchens or wet areas
- The socket has 3x 3pin plugs and 2x USB ports
- Suitable for charging iPhones, iPad, digital cameras etc
- Cut-out: 102mm

Code	Description	Box Qty
2009900	Chrome worktop pop up socket	1



BLACK WORKTOP POP UP SOCKET

- This pop up and retractable socket is ideal for use on counters worktops, island units, benches and desks
- The socket is IP54 rated when closed making the product suitable for use in kitchens or wet areas
- The socket has 3x 3pin plugs and 2x USB ports
- Suitable for charging iPhones, iPad, digital cameras etc
- Cut-out: 102mm

Code	Description	Box Qty
2009910	Black worktop pop up socket	1



BRUSHED NICKEL WORKTOP POP UP SOCKET

- This pop up and retractable socket is ideal for use on counters worktops, island units, benches and desks
- The socket is IP54 rated when closed making the product suitable for use in kitchens or wet areas
- The socket has 3x 3pin plugs and 2x USB ports
- Suitable for charging iPhones, iPad, digital cameras etc
- Cut-out: 102mm

Code	Description	Box Qty
2009920	Brushed nickel worktop pop up socket	1



SHAKER TYPE WOODEN CORBEL

- A decorative wooden piece used as a feature for over mantles, island units or shelving
- These corbels are solid available in oak or maple wood
- The maple wood can be painted to match the kitchen if need be
- They are fitted with brackets so that they are easy to mount
- They help put the finishing touches on old style or painted kitchens
- Size: 250 x 145mm

Code	Description	Box Qty
8301000	Shaker type wooden corbel maple plain	1
8301010	Shaker type wooden corbel oak plain	1



SCROLL TYPE WOODEN CORBEL

- A decorative wooden piece used as a feature for over mantles, island units or shelving
- These corbels are solid available in oak or maple wood
- The maple wood can be painted to match the kitchen if need be
- They are fitted with brackets so that they are easy to mount
- They help put the finishing touches on old style or painted kitchens
- Size: 230 x 145mm

Code	Description	Box Qty
8301005	Scroll type wooden corbel maple	1
8301015	Scroll type wooden corbel oak	1



FLUTED TYPE WOODEN POST

- A decorative wooden post which can be used as a filler piece or on an island unit
- Available in six different solid woods. Oak, Maple, Walnut, Mahogany, Red Deal or Popular
- Popular wood is used if you want to paint the post your own colour
- Please note that the post in the picture is lacquered but these posts are supplied in a raw state unfinished
- Size: 900 x 94 x 94mm

Code	Description	Box Qty
8305000	Fluted type wooden post 900 x 94 x 94mm	1





GUN BARREL TYPE WOODEN POST

- A decorative wooden post which can be used as a filler piece or on an island unit
- Available in six different solid woods. Oak, Maple, Walnut, Mahogany, Red Deal or Popular
- Popular wood is used if you want to paint the post your own colour
- Please note that the post in the picture is lacquered but these posts are supplied in a raw state unfinished
- Size: 900 x 94 x 94mm

Code	Description	Box Qty
8305010	Gun barrel type wooden post 900 x 94 x 94mm	1



REEDED TYPE WOODEN POST

- A decorative wooden post which can be used as a filler piece or on an island unit
- Available in six different solid woods. Oak, Maple, Walnut, Mahogany, Red Deal or Popular
- Popular wood is used if you want to paint the post your own colour
- Please note that the post in the picture is lacquered but these posts are supplied in a raw state unfinished
- Size: 900 x 94 x 94mm

Code	Description	Box Qty
8305020	Reeded type wooden post 900 x 94 x 94mm	1



COLONIAL TYPE WOODEN POST

- A decorative wooden post which can be used as a filler piece or on an island unit
- Available in six different solid woods. Oak, Maple, Walnut, Mahogany, Red Deal or Popular
- Popular wood is used if you want to paint the post your own colour
- Please note that the post in the picture is lacquered but these posts are supplied in a raw state unfinished
- Size: 900 x 94 x 94mm

Code	Description	Box Qty
8305030	Colonial type wooden post 900 x 94 x 94mm	1



CARN TYPE WOODEN POST

- A decorative wooden post which can be used as a filler piece or on an island unit
- Available in six different solid woods. Oak, Maple, Walnut, Mahogany, Red Deal or Popular
- Popular wood is used if you want to paint the post your own colour
- Please note that the post in the picture is lacquered but these posts are supplied in a raw state unfinished
- Size: 900 x 94 x 94mm

Code	Description	Box Qty
8305040	Carn type wooden post 900 x 94 x 94mm	1



BARLEY TWIST TYPE WOODEN POST

- A decorative wooden post which can be used as a filler piece or on an island unit
- Available in six different solid woods. Oak, Maple, Walnut, Mahogany, Red Deal or Popular
- Popular wood is used if you want to paint the post your own colour
- Please note that the post in the picture is lacquered but these posts are supplied in a raw state unfinished
- Size: 900 x 94 x 94mm

Code	Description	Box Qty
8305050	Barley twist type wooden post 900 x 94 x 94mm	1



IRON AND IRONING BOARD HOLDER

- A simple holder to help store an iron and ironing board
- Easy to install either to cabinet/door or wall mounted
- Welded steel construction, polished chrome plated finish
- Individually boxed with screws included

Code	Description	Box Qty
2801008	Iron and ironing board holder	1





PULL OUT IRONING BOARD

- For installation in the drawer space of most standard base cabinets
- When the drawer is opened the supports automatically extend
- Hinging front section permits trousers, shirts to be pulled easily over the board
- Internal cabinet width required between 360mm and 500mm
- Minimum cabinet depth of 500mm required
- Pulls out full and then unfolds giving you 1m of clearance



Code	Description	Box Qty
2801005	Pull out ironing board	1

TELESCOPIC TWO ARM TOWEL RAIL

- A telescopic towel rail that can be mounted horizontally to the cabinet or vertically to the underside of any work surface
- Matt anodised aluminum finish
- Quick and easy installation
- Individually boxed, fixing screws included



Code	Description	Box Qty
2801015	Telescopic two arm towel rail	1

PLINTH GRIP WITH DUST SEAL

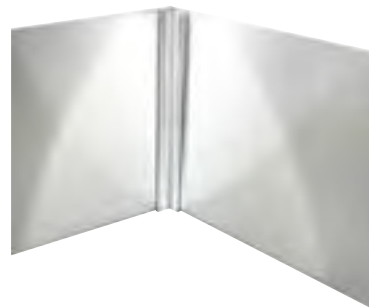
- Colour: transparent
- Length: 3m
- Width: 19mm
- Usage: to protect kitchen base units from water
- Flexible lip to protect against dirt



Code	Description	Box Qty
6201205	Plinth grip with dust seal	100

STAINLESS STEEL PLINTH

- Plastic profile with a stainless steel face
- Can be used with adjustable leg or glued on
- Connector fitting for different angle options
- Length: 3m
- Width: 150mm



Code	Description	Box Qty
6501050	Stainless steel plinth 3m x 150mm	10

ADJUSTABLE METAL LEG

- A stylish metal leg for use on base units or island units where no kicker board is needed
- 150mm high with adjustment
- Rubber base to stop leg from slipping
- Easy to fit and adjust
- Finish: chrome plated

Code	Description	Box Qty
6502210	Chrome plated adjustable metal leg 150mm	1



100mm ADJUSTABLE INTEX LEG

- Material: plastic
- Finish: black
- Packed: 4 legs and 2 clips per bag
- Dimensions: adjustable from 90-128mm
- Pre set at 100mm

Code	Description	Box Qty
6502208	Adjustable intex leg 100mm	65
6502209	Adjustable intex leg 100mm with 15mm dowel	65



150mm ADJUSTABLE INTEX LEG

- Material: plastic
- Finish: black
- Packed: 4 legs and 2 clips per bag
- Dimensions: adjustable from 140-178mm
- Pre set at 150mm

Code	Description	Box Qty
6502200	Adjustable intex leg 150mm	50
6502205	Adjustable intex leg 150mm with 15mm dowel	50



150mm HEAVY DUTY ADJUSTABLE INTEX LEG

- Material: plastic
- Finish: black
- Packed: 4 legs and 2 clips per bag
- Dimensions: 100-170mm adjustable
- Pre set at 150mm
- Complete with adjustable plinth clips

Code	Description	Box Qty
6502300	Heavy duty adjustable intex leg 150mm	50





710mm CHROME PLATED TABLE LEG

- Finish: chrome plated
- Packed: 4 pieces per box
- Ideal for office furniture or table tops
- Height adjustable foot giving +25mm adjustment
- Size: 710 x 60mm

Code	Description	Box Qty
6506000	Chrome plated table leg 710mm	4



870mm CHROME PLATED TABLE LEG

- Finish: chrome plated
- Packed individually
- Ideal for breakfast bars or worktops
- Height adjustable foot giving +25mm adjustment
- Size: 870 x 60mm

Code	Description	Box Qty
6506030	Chrome plated table leg 870mm	4



CONNECTION FITTING FOR INTEGRATED APPLIANCE DOOR

- A fitting for connecting a door to an integrated appliance
- Material: plastic
- Metal insert for screwing in to for extra strength
- Easy to fit, can be retro fitted

Code	Description	Box Qty
9810000	Connection fitting for integrated appliance door	10



LARGE ALUMINIUM PLINTH GRILL

- A metal grill for providing ventilation to an integrated appliance
- Dimension : 480 x 90mm
- Can be held in place with silicone or screws

Code	Description	Box Qty
2803089	Large aluminium plinth grill	1



DOOR CONNECTING PLATE

- Four hole fixing bracket for connecting two doors
- Ideal for tall larder units
- Finish: zinc plate or cream powder coated
- Size: 190 x 19 x 3mm



Code	Description	Box Qty
3101024	Door connecting plate zinc 190 x 19 x 3mm	100
3101025	Door connecting plate cream 190 x 19 x 3mm	100

HORIZONTAL DOOR CONNECTING PLATE

- Four hole fixing bracket for connecting two doors
- For two doors or double drawer fronts
- Finish: zinc plate
- Size: 98 x 36mm



Code	Description	Box Qty
3101026	Horizontal door connecting plate 98 x 36mm	50

PLINTH CLIP

- Material: plastic
- Used to connect the kicker board to the base unit
- Normally supplied with black adjustable legs



Code	Description	Box Qty
6502400	Plinth clip	100

THE AMADOR BAR STOOL

- A stylish stool which will add to any kitchen or island unit
- Metal base with leather seat
- Height adjustable, gas lift mechanism to allow you move up or down
- Turns 360°
- Available in:



black white cream red

Code	Description	Box Qty
6600100	The Amador bar stool	2





THE CALAVERAS BAR STOOL

- A stylish stool which will add to any kitchen or island unit
- Metal base with leather seat
- Height adjustable, gas lift mechanism to allow you move up or down
- Turns 360°
- Available in:



Code	Description	Box Qty
6600110	The Calaveras bar stool	2



THE SALINAS BAR STOOL

- A stylish stool which will add to any kitchen or island unit
- Metal base with leather seat
- Height adjustable, gas lift mechanism to allow you move up or down
- Turns 360°
- Available in:



Code	Description	Box Qty
6600120	The Salinas bar stool	2



THE SOLANO BAR STOOL

- A stylish stool which will add to any kitchen or island unit
- Metal base with leather seat
- Height adjustable, gas lift mechanism to allow you move up or down
- Turns 360°
- Available in:



Code	Description	Box Qty
6600130	The Solano bar stool	2



THE SHASTA BAR STOOL

- A stylish stool which will add to any kitchen or island unit
- Metal base with leather seat
- Height adjustable, gas lift mechanism to allow you move up or down
- Turns 360°
- Available in:



Code	Description	Box Qty
6600140	The Shasta bar stool	2



THE BENITO BAR STOOL

- A stylish stool which will add to any kitchen or island unit
- Metal base with leather seat
- Height adjustable, gas lift mechanism to allow you move up or down
- Turns 360°
- Available in:



Code	Description	Box Qty
6600150	The Benito bar stool	2

